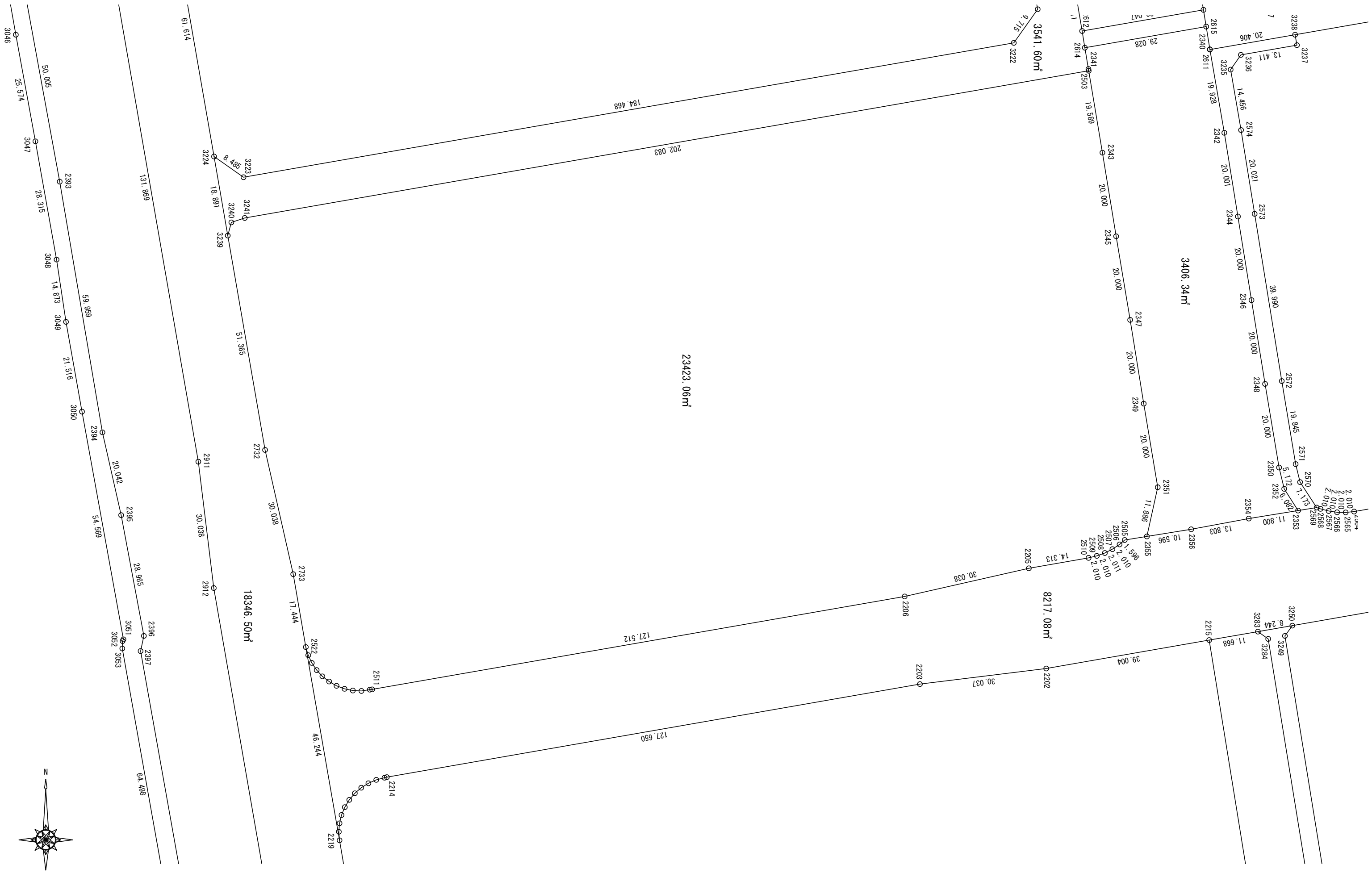


資料 2



面積計算 計算書

世界測地系 (測地成果2011)

令和 1 年 10 月 30 日

現場名：荒尾都市計画事業南新地土地区画整理事業 1 6 街区ほか街区確定計算測量業務委託

地番 No： 18 地番名： 1 2 街区

点番	Xn	Yn	距離	方向角	Yn+1-Yn-1	Xn × (Yn+1-Yn-1)
3239	-804.130	-53586.385	3.187	15-24-52	-7.959	6400.070670
3240	-801.058	-53585.538	3.352	71-19-58	4.023	-3222.656334
3241	-799.985	-53582.362	202.083	80-06-19	202.253	-161799.366205
2503	-765.259	-53383.285	19.589	170-29-09	202.315	-154823.374585
2343	-784.579	-53380.047	20.000	170-46-22	6.445	-5056.611655
2345	-804.320	-53376.840	20.000	170-29-07	6.513	-5238.536160
2347	-824.045	-53373.534	20.000	170-46-22	6.513	-5367.005085
2349	-843.786	-53370.327	20.000	170-29-07	6.513	-5495.578218
2351	-863.511	-53367.021	11.886	192-28-56	0.737	-636.407607
2355	-875.116	-53369.590	5.284	260-46-36	-7.785	6812.778060
2505	-875.963	-53374.806	1.596	229-20-39	-6.427	5629.814201
2506	-877.003	-53376.017	2.010	236-22-52	-2.885	2530.153655
2507	-878.116	-53377.691	2.011	243-09-17	-3.468	3045.306288
2508	-879.024	-53379.485	2.010	249-57-04	-3.682	3236.566368
2509	-879.713	-53381.373	2.010	256-49-41	-3.845	3382.496485
2510	-880.171	-53383.330	14.313	260-06-12	-16.057	14132.905747
2205	-882.631	-53397.430	30.038	257-14-33	-43.396	38302.654876
2206	-889.264	-53426.726	127.512	260-06-16	-154.911	137756.775504
2511	-911.177	-53552.341	0.553	260-06-43	-126.160	114954.090320
2512	-911.272	-53552.886	2.010	261-54-22	-2.535	2310.074520
2513	-911.555	-53554.876	2.010	272-49-21	-3.998	3644.396890
2514	-911.456	-53556.884	2.009	281-39-24	-3.976	3623.949056
2515	-911.050	-53558.852	2.011	290-33-10	-3.851	3508.453550
2516	-910.344	-53560.735	2.009	299-33-01	-3.631	3305.459064
2517	-909.353	-53562.483	2.010	308-10-12	-3.328	3026.326784
2518	-908.111	-53564.063	2.011	317-03-20	-2.950	2678.927450
2519	-906.639	-53565.433	2.009	326-09-35	-2.489	2256.624471
2520	-904.970	-53566.552	2.010	334-57-08	-1.970	1782.790900
2521	-903.149	-53567.403	2.009	343-43-46	-1.414	1277.052686
2522	-901.220	-53567.966	17.444	350-07-38	-3.554	3202.935880
2733	-884.034	-53570.957	30.038	347-15-51	-9.613	8498.218842
2732	-854.735	-53577.579	51.365	350-07-43	-15.428	13186.851580

倍面積合計	46846.137998
1/2	23423.0689990

合計面積	23423.0689990
------	---------------